



# Restoring Family Links

## Het Rode Kruis helpt!

**Are you searching for your family?**  
The Red Cross can help!

**Miyaad raadinaysaa qoyskaaga?**  
Laan qayrta Cas way caawin kartaa!

ንስድራቤትካ ኣብ ምእላሽ ዶ ኣለኻ ድኻ?  
እቲ ቐይሖመስቀልኻ ግዛ ይኸክል እዩ!

[rodekruis.nl/restoringfamilylinks](http://rodekruis.nl/restoringfamilylinks)



# Bent u het contact met familie verloren?

**Opsporing van en contactherstel met familieleden is een belangrijke taak van het Rode Kruis. Het Rode Kruis kan u wellicht helpen om weer in contact te komen met uw dierbaren. Waar ook ter wereld.**

## Opsporing en contactherstel

Oorlog, conflict, ramp, migratie of een andere humanitaire noodsituatie kan ertoe leiden dat familieleden van elkaar gescheiden raken. Dankzij onze neutraliteit krijgen wij toegang tot veel ramp- en conflictgebieden. In vrijwel ieder land is een Rode Kruis of Rode Halve Maan vereniging. Door dit internationale netwerk kunnen wij wereldwijd familieleden opsporen. Ook kunnen wij berichten naar uw familie sturen wanneer u door een ramp of conflict geen contact meer krijgt via telefoon, post of e-mail.

## Persoonlijke documenten

Wanneer u tijdens (krijgs-)gevangenschap bent bezocht door een medewerker van het Internationale Comité van het Rode Kruis (ICRC), dan kunnen wij mogelijk een detentieverklaring afgeven. Ook kan het Rode Kruis in een aantal landen persoonlijke documenten zoals geboorteaktes opvragen en/of doorsturen.

## ONAFHANKELIJK EN VERTROUWELIJK

Het Rode Kruis werkt onafhankelijk van de overheid en andere organisaties. Onze gesprekken met u zijn (en blijven) vertrouwelijk.

## COMMUNICATIE IN UW EIGEN TAAL

Het is geen probleem als u geen Engels of Nederlands spreekt. U kunt zelf een tolk meenemen of wij kunnen een tolk regelen voor uw afspraak.

## ONZE HULP IS KOSTELOOS

U kunt gratis gebruik maken van onze diensten.

## Wie helpen wij?

Het Rode Kruis kan u mogelijk helpen als uw verzoek voor opsporing of contactherstel met familie voldoet aan de volgende criteria:

- U verblijft in Nederland.
- U bent het contact met uw familie kwijtgeraakt door oorlog, conflict, ramp, migratie of een andere humanitaire noodsituatie.
- U wilt het contact met uw familie herstellen.
- U zoekt niet om een juridische of financiële reden contact met uw familie.

Voldoet uw verzoek niet aan onze criteria dan zullen wij u zo goed mogelijk doorverwijzen naar andere organisaties.

## Hoe werken wij?

Het Rode Kruis spoort wereldwijd vele mensen op en stuurt jaarlijks duizenden Rode Kruis-berichten naar familieleden. Sinds 1992 werkt het Nederlandse Rode Kruis met speciaal opgeleide vrijwilligers op diverse locaties in het land.

## Welke informatie hebben wij nodig?

Voor opsporing van familie heeft het Rode Kruis veel informatie nodig. Onze Restoring Family Links-vrijwilligers zullen onder meer vragen naar:

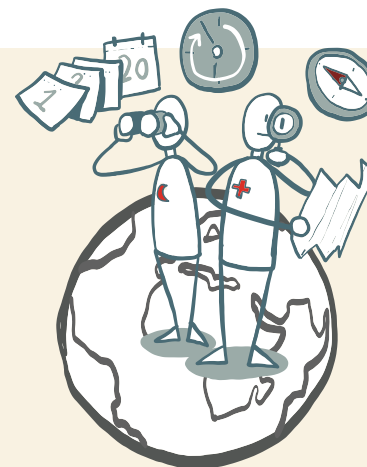
- Naam van uzelf en de gezochte persoon of personen
- Geboortedatum en -plaats
- Nationaliteit
- Laatste bekende adres
- Datum en omstandigheden van contactverlies

## Hoe komt u in contact met ons?

Ga voor meer informatie over onze hulp naar de website van het Rode Kruis: [rodekruis.nl/restoringfamilylinks](https://rodekruis.nl/restoringfamilylinks)

U kunt op de website ook uw gegevens achterlaten. Een medewerker neemt dan contact met u op.

Voor informatie over internationale opsporings-activiteiten, ga naar de website van het ICRC: [www.familylinks.icrc.org](https://www.familylinks.icrc.org). Op deze website vindt u ook ervaringen van mensen die familie hebben opgespoord.



# Have you lost contact with your family?

**Finding - and restoring contact with - family members is one of the important tasks carried out by the Netherlands Red Cross. The Red Cross may be able to help you get back in touch with your loved ones - wherever in the world they may be.**

## Finding family members and restoring family links

War, conflict, disaster, migration or other humanitarian emergencies can cause family members to become separated from one another. Our neutrality means that we are granted access to many disaster areas and conflict zones. There is a Red Cross or Red Crescent society in almost every country. This international network allows us to trace family members all over the world. If you can no longer contact your family by phone, post or e-mail because of a disaster or conflict, we can also send messages.

## Personal documents

If you have been imprisoned and are visited by a member of the International Committee of the Red Cross (the ICRC), we may be able to issue a certificate of detention. In addition, in a number of countries the Red Cross can request and/or forward personal documents such as birth certificates.

## INDEPENDENT AND CONFIDENTIAL

The Red Cross works independently of governments and other organisations. In other words, our conversations with you are (and remain) confidential.

## COMMUNICATION IN YOUR OWN LANGUAGE

It is not a problem if you do not speak English or Dutch. You can either bring your own interpreter with you, or we can provide an interpreter for your appointment.

## OUR HELP WON'T COST YOU ANYTHING

You can use our services free of charge.

## Who can we help

The Red Cross may be able to help you if you haven't been able to contact your family yourself and the following applies:

- You reside in the Netherlands.
- You have lost contact with your family due to a war, conflict, disaster, migration or other humanitarian emergency.
- You want to restore contact with your family.
- You are not looking for your family for legal or financial reasons.

If your request does not comply with our criteria, we will refer you to other organisations wherever possible.

## How we work

The Red Cross traces many people all over the world and sends thousands of Red Cross messages to family members each year. Since 1992, the Netherlands Red Cross has been working with specially trained volunteers at a number of locations throughout the country.



## The information we need from you

Voor opsporing van familie heeft het The Red Cross needs a lot of information to trace family members. Our Restoring Family Links volunteers will ask you to provide (among other things) the following information:

- Your name and the name of the person or persons you are trying to find
- Date and place of birth
- Nationality
- Last known address
- Date and circumstances of the loss of contact

## How to get help

For more information about the help we can provide, please visit the Netherlands Red Cross website at:

[rodekruis.nl/restoringfamilylinks](https://rodekruis.nl/restoringfamilylinks)

You can also use the above website to leave your contact information. One of our staff members will get in touch with you.

For more information on our international tracing activities, please go to the ICRC website at: [www.familylinks.icrc.org](https://www.familylinks.icrc.org). Here you can also read about the experiences of people who have successfully traced family members.



# Miyaad xidhiidhkii qoyskaaga wayday?

**Helida - iyo soo celinta xidhiidhka - xubnaha qoyska waa mid ka mid ah hawlaha ugu muhiimsan, oo ay fuliso Laanqayrta Cas ee Nederlaan. Laan qayrta Cas waxay awood u yeelan karaan inay kaa caawiyaan inaad ku soo noqon karto addoo la xidhiidhaya kuwa aad jeclayd -meel kasta oo adduunka ah oo ay joogi karaan.**

## Helida xubnaha qoyska iyo soo celinta xidhiidhada qoyska

Dagaalka, khilaafka, masiibada, socdaalka ama gurmadyada kale ee aadaminimada ay sababi karaan xubnaha qoysku inay midba ka kale ka maqnaado. Dhex-dhexaad-nimadeena macnaheedu waxa weeye in naloo ogaalo gaadhida aagaga badan ee masiibooyinka iyo aagaga khilaafka. Waxaa jira Laan qayrta Cas ama bulshadda Bisha Cas ugu badnaan wadan kasta. Shabakada caalamiga ah waxay noo oggolaataa inaan raad raacno xubnaha qoyska ee adduunka oo dhan. Haddii aanad in dheeraad ah

kala xidhiidhin qoyskaaga telefoon ahaan, boostada ama iimaylka sababtoo ah masiibada ama khilaafka, waxaan sidoo kale u diri karnaa fariimo.

## Dhokumentiga gaarka ah

Haddii lagu xidhay oo ku soo booqdeen xubinta Guddida Caalamiga ah ee Laan qayrta Cas (ICRC), waxaan awood u yeelan karnaa inaan bixino shahaadada xidhida. Intaa waxa dheer, tiro wadamada ah Laan qayrta Cas waxay codsan kartaa iyo/ama gudbin gartaa dhokumentiga gaarka ah sida shahaadooyinka dhalashadda.

## Kuma ayaan caawin karnaa

Laan qayrta Cas waxay awood u lahaan kartaa inay ku caawiso haddii aanad awood u lahayn inaad la xidhiidho qoyskaaga laftaada iyo inta soo socota ayaa la xidhiidha:

- Waxaad degen tahay Nederlaan.
- Waxaad wayday xidhiidhkii qoyskaaga iyaddoo ay sababtay dagaal, khilaaf, masiibo, socdaalka ama gurmada kale ee aadaminimada .
- Waxaad doonaysaa inaad soo celiso xidhiidhka qoyskaaga.
- Uma raadinaysid qoyskaaga asbaabo sharci ama dhaqaale.

Haddii codsigaaga aanu u hogaansamin qiimayntayada, waxaanu kuu gudbin doonaa ururada kale meel kasta oo suuragal ah.

## Sida aanu u shaqayno

Laan qayrta Cas waxay raad raacdaa ama raadisaa dadka dhammaan adduunka guud kiisa oo waxay u dirtaa kuman yaal fariimaha Laan qayrta Cas ah xubanaha qoysaska sanad kasta. Laga bilaabo 1992, Laan qayrta Cas ee Nederlaan waxay la shaqaynaysay mutadawiciinta sida gaarka ah u tababaran tiro goobo ah wadanka oo dhan.

## Macluumaadka aanu adiga kaaga baahanay

Laan qayrta Cas waxay u baahan tahay macluumaad badan si loo raadiyo xubnaha qoyskaaga. Mutadawiciintayada Soo celinta Xidhiidhada Qoyska waxay ku waydiin doonaa inaad bixiso (marka lagu daro waxyaabaha kale) macluumaadka soo socda:

- Magacaaga iyo magaca qorka ama dadka aad isku deyaayo inaad hesho
- Taariikhda iyo meesha dhalashada
- Dhalashada
- Cinwaanka u dambeeya ee la garanayo
- Taariikhda iyo duruufaha waayida xidhiidhka

## Sida loo helo caawimada

Macluumaadka dheeraadka ah ee ku saabsan caawimada aanu bixin karno, fadlan booqo websaydka Laan qayrta Cas ee Nederlaan.

[rodekruis.nl/restoringfamilylinks](https://rodekruis.nl/restoringfamilylinks)

Waxaad sidoo kale isticmaali kartaa websaydka sare si aad uga tagto macluumaadkaaga xidhiidhka. Mid ka mid ah xubnahayaga shaqaalaha waa uu kula soo xidhiidhi donaa adiga.

Macluumaadka dheeraadka ah ee hawlaha hayaga raad raaca caalamiga, fadlan booqo websaydka ICRC bogga:

[www.familylinks.icrc.org](https://www.familylinks.icrc.org).

Halkan waxaad sidoo kale akhriyi kartaa wax ku saabsan waayo aragnimada dadka si guul leh u raad raacau xubnaha qoyskooda.

## MADAX BANAAN OO QARSOODI AH

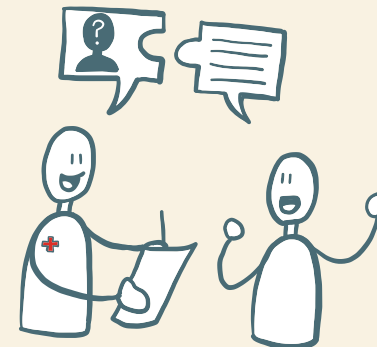
Laan qayrta Cas waxay si madax banaan ula shaqaysaa dowladdaha iyo ururada kale. si kale haddii loo dhigo, wada sheekaysigaya aan kula lahayn adiga waa (oo waxay ahaanaysaa) qarsoodi.

## WADA XIDHIIDHKA LUQADDAADA GURIGA

Maaha dhibaato haddii aanad ku hadlin Ingiriisi ama Dhajka. Waxaad miduun keeni kartaa turjubaankaaga, ama waxaanu ku siin karnaa turjubaan ballankaaga.

## CAAWIMADAYADU WAX KHARASH AH KUGU TEGIMAYSO

Waxaad u isticmaali kartaa adeegyadayada bilaash.



# ምስ ስድራቤትካ መራኽቢ ዶ ጠፊኡካ ኣሎ ?

ምድላይን - ከምኡውን እንደገና ምምላስ ምስ ኣባላት ቤተሰብ ካብ መንጎ ቀይሖ መስቀል Netherlands ዘካይዶም ስራሕቲ ኦቲ ሓዲ እዩ። ኦቲ ቀይሖ መስቀል ምስቶም ፍትዎት ስድራቤትካ ብሓንሳብ እንደገና ንምርኻብ ሓገዝ ክገብሩ እዩ - ኣብ ዝኾነ ኩርናዕ ዓለም ክሳብ ዝሃለዉ።

ናይ ቤተሰብ ኣባላት ምድላይ ከምኡውን ምስ ናይ ቤተሰብ ዝምድናታት መሊሱ መራኽቢ

ውግኡ፡ ግጭት፡ሓዲጋ፡ ስደት ወይ ከኣ ካልኦት ሰብኣዊ ህጹጽ ረዲኤት ዝኣመሰሉ ኩነታት ናይ ቤተሰብ ኣባላት ነንሕድ ሕዱ ክፈላለ ኪገብር ይኽእል። ናትና ገለልተኛ ማለት ኣብ ብዙሕ ሓዲጋ ከምኡውን ግጭት ዘለዎም ከባቢታት መኣተዊ ምሃብ ማለት እዩ። ደርጋ ኣብ ኩሉ ሃገር ምባል ይከኣል ናይ ቀይሖ መስቀል ወይ ከኣ ቀይሖ ወርሒ ማሕበረሰብም ኣሎ እዩ። እዚ ዓለምለኻዊ መርበብ እዚ ኣብ ዙርያ ዓለም ዘለዉ ናይ ቤተሰብ ኣባላት ንምክትታል ዝሕገዝ እዩ። ብሓዲጋ ወይ ከኣ ብግጭት ምኽንያት ቤተሰብካ፡ ብተለፎን

፡ምልክታ ወይ ከኣ ኢ-ሜይል ክሳብ ሕጂ ክትራኽቡ ተዘይከኣሉ፡ ንሕና መልክክትታት ምልክኻ ንኽእል ኢና።

## ግላዊ ሰነዳት

እንተድኣ ተኣሲርካ ነይርካ ከምኡውን ብናይ ዓለም ለኽ ቀይሖ መስቀል ሽማግሌ ( ኦቲ ICRC) ኣባል ዝኾነ ብጽሑ ተገይሩካ ነይሩ ፡ ንሕና መርገጋጽ ምስክር ወረቐት ምሃብ ክንኽእል ንኹውን ኢና። ብተወሳኺ፡ ኣብ ብዙሓት ሃገራት ቀይሖ መስቀል ከም ናይ ልደት ምስክር ወረቐቶቲ ዘበሉ ዉልቃዊ ዝኾኑ ሰነዳት ምሕታት ከምኡውን / ወይ ከኣ ምምሕልላፍ ይኽእል እዩ።

## ንሕና ንመን ኢና ንሕገዝ ንኽእል

ንሕገ-ም ብርእስኹም ቤተሰብኹም ንምዝርራብ ተዘይከኣኩም ኦቲ ናይ ቀይሖ መስቀል ክሕገዝኩም ይኽእል፡ ከምኡውን ዝሰዕብ ተግባራዊ ክኹውን ኢዩ፡

ኣብ ዉሽጢ Netherlands ኣትነብሩ ።[

- ብውግኡ፡ ግጭት፡ ሓዲጋ፡ ስደት ወይ ከኣ ካልኦት ሰብኣዊ ህጹጽ ሓገዝ ምኽንያት ምስ ቤተሰብካ ብሓንሳብ ምርኻብ ተቋራጽኩም
- ምስ ቤተሰብካ ብሓንሳብ ንምትእስሳር እንደገና ምርኻብ ደሊኹም።
- ንቤተሰብ ሕጋዊ ወይ ከኣ ናይ ገንዘብ ምኽንያት ኣይኮነን ኣትደልዩም ዘለኹ።

እንተድኣ ናትካ ሕቶ ምስቶም ናትና ረጃቢታት ዘይቃደው ኮይኑ፡ ንሕና ክንዲ ዝተኸኣለና መጠን ናብ ካልኦት ካል ክነመሓላፊካ ንኽእል ኢና።

## ከመይ ኢና ንሰርሖ

ኦቲ ቀይሖ መስቀል ኣብ ዙርያ ዓለም ዘለዉ ብዙሕ ሰባት ብምክትታል በቢ ዓመቲ በሽሓት ዝቀጸሩ ናይ ቀይሖ መስቀል መልክክትታት ንቤተሰብ ኣባላት ይልክኹ። ካብ 1992 ጀሚሩ፡ ኦቲ ናይ Netherlands ቀይሖ መስቀል ኣብታ ሃገር ኣብ ብዙሕ ከባቢታት ብፍሎይ ስልጠና ብዝተዓለሙ ሰብ ሰናይ ድሌት ኣናሰርሖ እዩ ዝርከብ።

## ንሕና ካባኻ እንደልዩ ሓበሬታ

ኦቲ ቀይሖ መስቀል ናይ ቤተሰብ ኣባላት ንምክትታል ብዙሕ ሓበሬታ የድልዩ እዩ። ኣቶም ናትና ናብ ስድራ ቤት ዳግም ንምምላስ ፍቓደኛ ዝኾኑ ሰራሕተኛታት ነዘም ዝሰዕቡ ሓበሬታታት (ነዘም ዝሰዕቡ ነገራት ካብኣቶም) ክሓቱኻ እዩም

- ናይካ ከምኡውን ናይቲ ወይከኣ ናይቶም ኣትደልዩም ሰባት ሸም
- ዝተወለደካሉ መዓልቲ ከምኡውን ቦታ
- ዜግነት
- ናይ መጨረሻታ ፍሎጥ ኣድራሻ
- ርክብ ዝተቆረጸሉ መዓልቲ ከምኡውን ኩነታት ናይቲ ዝጠፈኡ።

## ሓገዝ ከመይ ምርካብ ይከኣል ?

ብዛዕባ ነጻኻ ክንሂቦ እንኽእል ሓገዝ ዝምልከት ተወሳኺ ሓበሬታ ንምርካብ በጃኻ ነቲ Netherlands ቀይሖ መስቀል መርበብ ሓበሬታ ንብንዮ ኢኻ ብ፡

[rodekruis.nl/restoringfamilylinks](http://rodekruis.nl/restoringfamilylinks)

ንሳኻ ኣብዚ ድሕረ-ገጽ መራኽቢ ሓበሬታ ንምግዳፍ ኦቲ ኣብ ላዕሊ ዘሎ ድሕረ-ገጽ እዉን ምጥቃም ትኽእል ኢኻ። ካብቶም ሰራሕተኛታትና ኦቲ ሓዲ ምሳኻ ክራኽብ እዩ

ስለኦቲ ዓለምለኻዊ ናይ ክትትል ተግባርና ተወሳኺ ሓበሬታ ንምርካብ በጃኻ ናይ ICRC ድሕረ-ገጽ ናብ ዝኾነ ኪድ ብ፡ [www.familylinks.icrc.org](http://www.familylinks.icrc.org)። ኣብእዚ ብተወሳኺ ናይ ቤተሰብ ኣባላት ብዕዉት ኩነታት ናይ ዝረኽቡ ሰባት ተመኩሮታት ኣብዚ ምንባብ ትኽእል።

## ናጻ ከምኡውን ምስጢራዊ

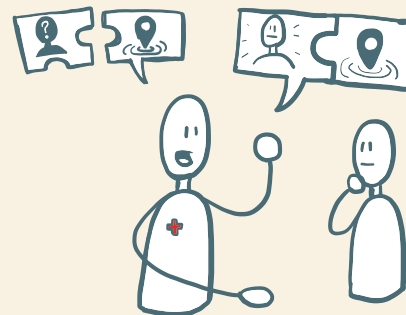
ኦቲ ቀይሖ መስቀል ካብ መንገስቲ ከምኡውን ካልኦት ትካላት ናጻ ኮይነ ዘሰርሖ እዩ። ብኸልኦ ኣዘራርባ፡ ንሕና ምሳኻ ብሓንሳብ እንገብሮ ዝርርብ (ከምኡውን ዝጸንሑ) ምስጥራዊ ኮይኖም እዩም።

## ሓሳብ ምልዉጥ ብቋንቋኻ እዩ

እንግሊዝኛ ወይ ከኣ Dutch ምዝራብ ዘይትኽእል እንተኾይንካ እዉን ጸገም ኣይኮነን። ንሰኻ ባዕሊኻ ተርጓሚ ሒዝካ ምምጻኡ ትኽእል ኢኻ ወይ ከኣ ንሕና ነቲ ናይ ቐጻሮኻ መዓልቲ ዝኹውን ተርጓሚ ክነቐርበልካ ንኽእል ኢና።

## ኦቲ ንሕና ንገብረልኹም ሓገዝ ወልሓነቲ ነገር ወጻኢ ኣይሓተኩምን እዩ

ኦቲ ናትና ኣገልግሎት ብናጻ ምጥቃም ትኽእሉ ኢኹም።



## Self search for family

You can also search for your family member yourself using social media, common contacts and the specialized website 'Trace the Face'.

- Search for your family member via social media (Facebook, Instagram, WhatsApp...). Remember to spell your relative's name in different ways.
- Look for common contacts. They may be able to reach your lost relative.
- Search for your relative on the Red Cross website 'Trace the Face': [www.tracetheface.org](http://www.tracetheface.org)  
This is a website of the International Committee of the Red Cross (ICRC) that shows pictures of people who are looking for relatives. If you want to put your own photo on the website, make an appointment with our department Restoring Family Links.
- Do not stop after one attempt. Keep following the social media and check the 'Trace the Face' website regularly. On this website new photos of searching family members are posted continuously.

## Neem contact op met het Rode Kruis



Get in touch with  
the Red Cross

La xidhiidha Laan  
qayrta Cas

ምስቲ ናይ Netherlands ቀይሕ  
መስቀል ብሓንሳብ ተራሽብ



[rodekruis.nl/restoringfamilylinks](http://rodekruis.nl/restoringfamilylinks)

Or call: 070 44 55 822



A part of the International Red Cross and Red Crescent Movement